

SNMP/ WEB CARD MODULE



The SNMP/ WEB Card provides you with a easy network management function. It supports both SNMP and HTTP. The SNMP (Simple Network Management Protocol) will create a web site for your PV inverter which will help to monitor and control the PV inverter remotely as easily as surfing on a web site.

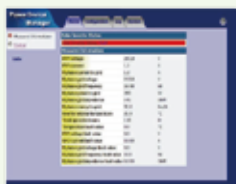


Figure 1. GT inverter information display on the web site.



Figure 2. GT inverter SMTP Setting.



Figure 3. Event notification.



Figure 4.

With these Inverters, the SNMP Card (box) provides you with reliable and easy to use network management functions. SNMP Card uses the HTTP (Hypertext Transfer Protocol) to monitor the inverters. This way, it can drive the inverters to become the standard network management device. Therefore, the user can remotely control and get the condition of the inverters via general web browser (such as Internet Explorer, Netscape Browser...etc) as easily as surfing a web site. In addition, we provide the full-fledged Solar control for SNMP Card to satisfy the GT system management requirement, like "one PC to many inverters" or "different PCs to one inverter" (figure 4). We support all the basic functions like e-mail, notification, log file, executing command file, reset the inverter...etc.

Features

- **Network interface:** UTP Fast Ethernet 10/ 100 auto-sense.
- **Real Time clock:** Adjustable by SMTP.
- **E-Mail:** It adopts SMTP (Simple Mail Transfer Protocol) to complete the e-mail function. This way, when certain the inverter events happened, the user can choose to send out the e-mail with authentication or without.
- **Executing command file:** Define your own actions for each inverter event. The SNMP Card will perform actions according to your definitions. The actions include saving file, broadcast, etc...
- **Inverter Information:** The SNMP Card allows you to check the information and status locally or remotely. An event log file which contains all inverters – related events, such as power failures, shutdowns, and power recoveries, etc. A data log file which is collecting electrical parameters, inclusive of input voltage, output voltage, output frequency, temperature, etc...
- **OnEvent:** OnEvent is a new notification technology, which can exchange multimedia message over LAN, regardless of operation system. When a event occurs, a computer with OnEvent software installed.